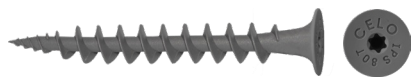
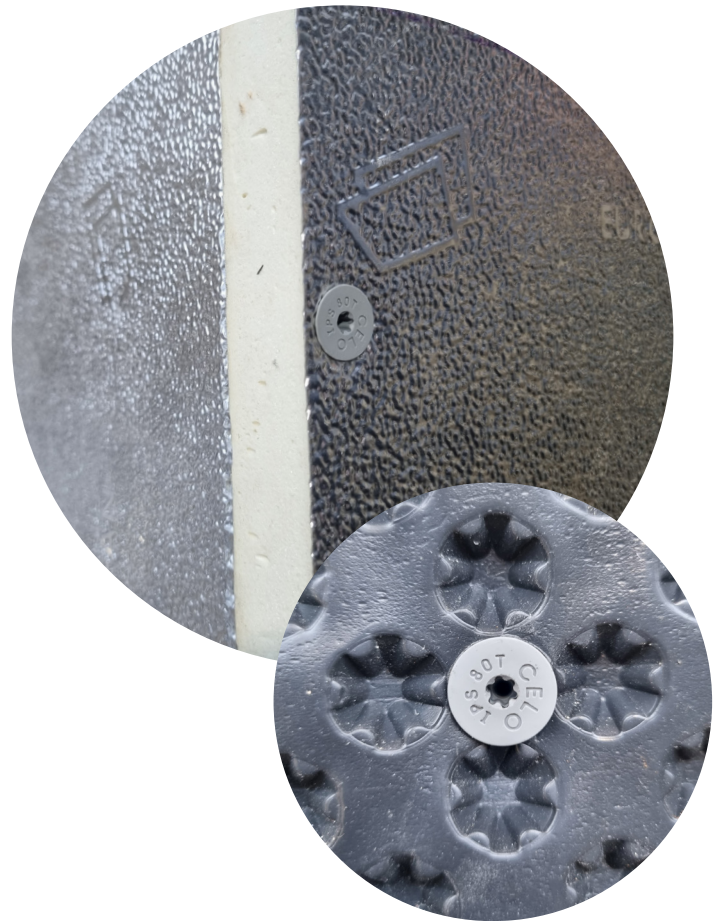


# Insulation screw IPS 80T

## Advantages



- Special screw with trumpet head for direct fastening into external thermal insulation composite systems (ETICS) - fast and without thermal bridges!
- Perfectly suitable for joining two insulation boards such as PU rigid foam boards, fastening foils or for the sheathing/insulation of ventilation ducts
- For fixing motion detectors, lighting, signs etc. in the insulation board
- No need to pre-drill into plaster ( $\leq 7$  mm) due to the sharp drilling tip
- Special screw made out of robust glass-fibre reinforced nylon; ageing-, weather- and UV-resistant
- Functional trumpet head for flush countersinking
- Suitable for light fixings with a screw  $\varnothing 3.5$  mm due to head hole



## Suitable building materials

### Very suitable



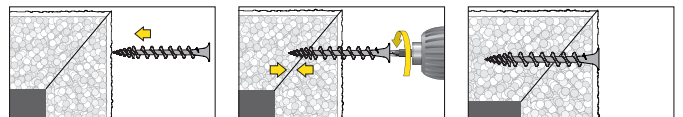
- External Thermal Insulation Composite Systems (ETICS)
- Styrofoam boards
- Hard foam boards
- Polystyrene boards
- Wood fibre boards (also see IPS-H)

## Approvals and certificates

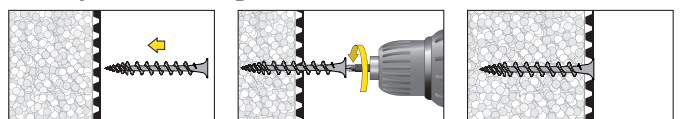


## Mounting

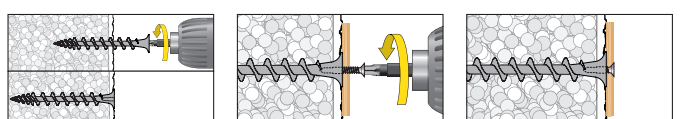
### Example: Joining two insulation boards



### Example: Fastening insulation foil

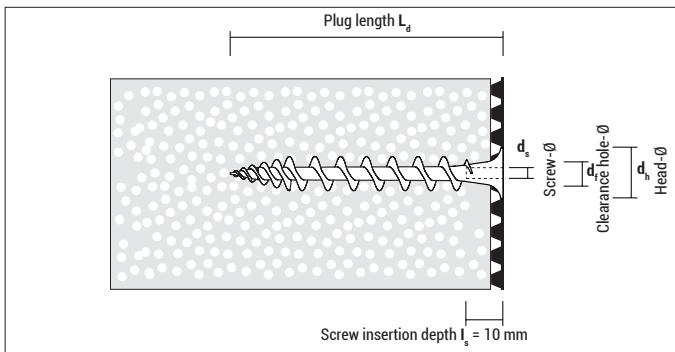


### Lightweight fastening with screw



Can be used with: screw  $\varnothing 3.5$  mm;  
Screw length  $L_s = 10$  mm + thickness of fixture

## Insulation screw IPS 80T



### IPS 80T

Type	Art-No	RAL-Code	$L_d$ [mm]	$d_h$ [mm]	$I_s$ [mm]	$d_s$ [mm]	Drive	$d_f$ [mm]	€/100 pcs	[pcs]	[pcs]
IPS 80T Telegrey	GGR80IPST	RAL 7045	80	16	10	3,5	TX 25	8 – 10		1.500	–

In bulk, delivery on order

### Loads and dimensions

Type	Applications in Polystyrene EPS (PS15, PS20) unplastered	Applications in Polystyrene EPS (PS15, PS20) plastered	Application in Rockwool, Coverrock Plus unplastered	Applications in Polystyrene XPS (perimeter insulation) unplastered	Thickness of insulation material
	$F_{rec}$ [kN]	$F_{rec}$ [kN]	$F_{rec}$ [kN]	$F_{rec}$ [kN]	≥ [mm]
IPS 80T	0,04	ca. 0,06*	0,02 <sup>1)</sup>	0,09	80

$F_{rec}$ : Recommended load in all directions incl. safety factor of 5

\* Value may differ depending on the type and thickness of the plaster

<sup>1)</sup> Avoid impact loads