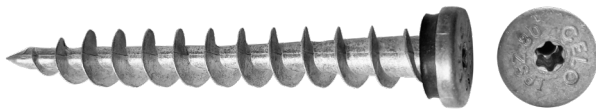


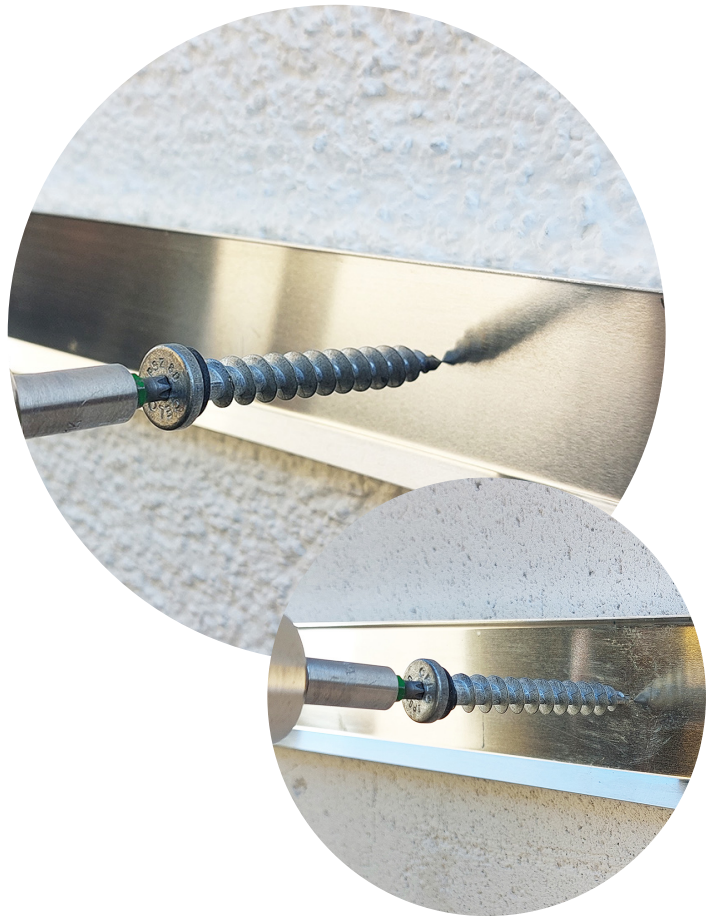
Insulation screw IPSZ 80

Advantages



IPSZ 80, zinc die casting

- Special screw for direct fastening into external thermal insulation composite systems (ETICS) - fast and without thermal bridges!
- For fastening of wall connection profiles, metal sheets, base protection profiles, cornice covers, motion detectors, lamps, signs, etc. into the insulation material
- No pre-drilling in plaster due to sharp drilling tip
- Installation directly into aerated concrete AAC2 and AAC4 (with increased pressure) possible
- The drill tip drills through thin sheet metal
- Ageing, weather and UV-resistant EPDM sealing ensures reliable sealing
- Pre-assembled and ageing, weather and UV-resistant EPDM sealing
- EPDM sealing ensures clean sealing against driving rain up to wind force 11 (violent storm), tested according to DIN EN 1027, no reworking required
- Stylish flat head with TX-recess
- Suitable for clearance holes \varnothing 8 mm (common for wall profiles)
- Also suitable for light duty fixings in combination with a screw \varnothing 3,5 mm
- Good corrosion resistance



Suitable building materials

Very suitable

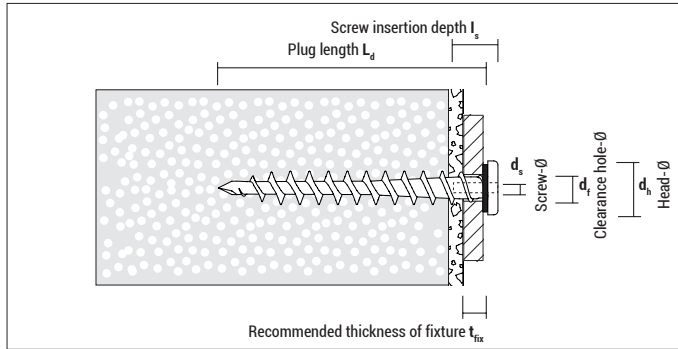


- External Thermal Insulation Composite Systems (ETICS)
- Styrofoam boards
- Hard foam boards
- Polystyrene boards
- Wood fibre boards and perimeter insulation (IPS-H, see page 101, is recommended)
- Aerated concrete AAC2
- Aerated concrete AAC4

Approvals and certificates

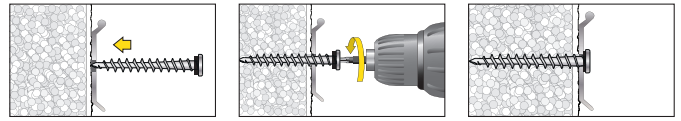


Insulation screw IPSZ 80

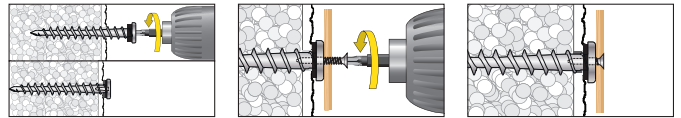


Mounting

Wall connection profiles



Light duty fixings with screw



Usable with: Screw \varnothing 3,5 mm;
Screw length $L_s = 10$ mm + Thickness of fixture



IPSZ 80 made of zinc die casting, with EPDM sealing

Type	Art-No	L_d [mm]	d_h [mm]	I_s [mm]	d_s [mm]	t_{fix} [mm]	Drive	d_f [mm]	€ / 100 pcs	[pcs]	[pcs]
IPSZ 80	980IPSZ	80	16	10	3,5	≤ 10	TX 25	8 – 10 *		50	900

* Soft tinsmith profiles can be drilled directly.

Loads and dimensions

Type	Applications in Polystyrene EPS (PS15, PS20) unplastered F_{rec} [kN]	Applications in Polystyrene EPS (PS15, PS20) plastered F_{rec} [kN]	Application in Rockwool, Coverrock Plus unplastered ¹⁾ F_{rec} [kN]	Applications in Polystyrene XPS (perimeter insulation) unplastered F_{rec} [kN]	Aerated concrete AAC2 F_{rec} [kN]	Aerated concrete AAC4 F_{rec} [kN]	Thickness of insulation material or brick \geq [mm]
IPSZ 80	0,04	ca. 0,06*	0,02	0,09 ¹⁾	0,23	0,27	80

F_{rec} : Recommended load in all directions incl. safety factor of 5

* Value may differ depending on the type and thickness of the plaster

¹⁾ Avoid impact loads