

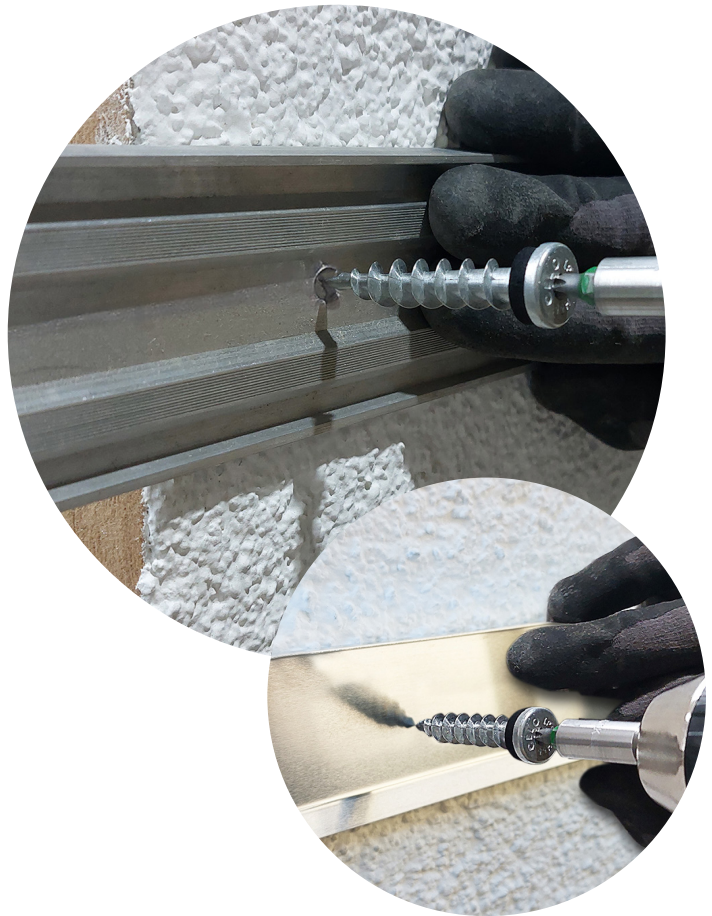
# Insulation screw IPSZ-H 55

## Advantages



IPSZ-H 55, zinc die casting

- Special screw for direct fastening into wood fibre insulation boards and perimeter insulation panels - extremely fast and without thermal bridges!
- For fastening of wall connection profiles, metal sheets, base protection profiles, cornice covers, motion detectors, lamps, signs, etc. into the insulation material
- Length only 55 mm; therefore also perfectly suitable for small insulation thicknesses (from 60 mm)
- No pre-drilling in plaster due to sharp drilling tip
- Installation directly into aerated concrete AAC2 and AAC4 (with increased pressure) possible
- The drill tip drills through thin sheet metal
- Pre-assembled and ageing, weather and UV-resistant EPDM sealing
- EPDM sealing ensures clean sealing against driving rain up to wind force 11 (violent storm), tested according to DIN EN 1027, no reworking required
- Stylish flat head with TX-recess
- Suitable for clearance holes  $\varnothing$  8 mm (common for wall profiles)
- Also suitable for light duty fixings in combination with a screw  $\varnothing$  3,5 mm
- Good corrosion resistance



## Suitable building materials

### Very suitable



- Wood fibre boards
- Perimeter insulation panels



- Aerated concrete AAC2
- Aerated concrete AAC4

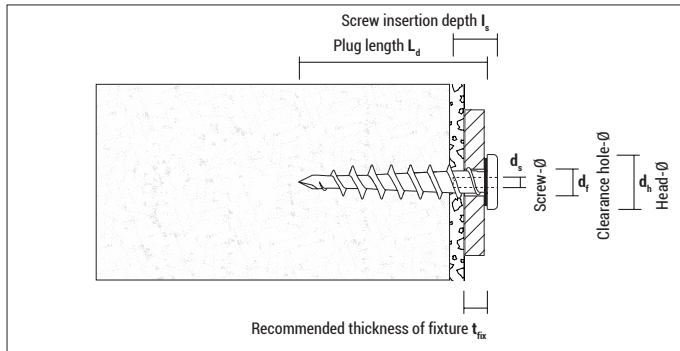
## Approvals and certificates



Tested for driving rain tightness by the  
Prüfenzentrum für Bauelemente (Germany)

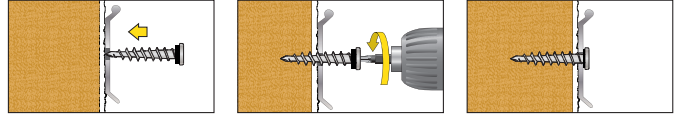


## Insulation screw IPSZ-H 55

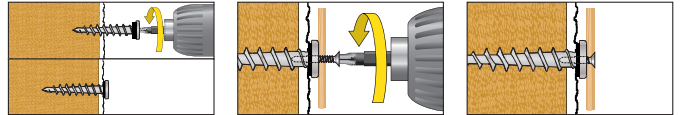


### Mounting

#### Wall connection profiles



#### Light duty fixings with screw



Usable with: Screw  $\varnothing$  3,5 mm;  
 Screw length  $L_s = 10$  mm + Thickness of fixture



**IPSZ-H** made of zinc die casting, with EPDM sealing

Type	Art-No	$L_d$ [mm]	$d_h$ [mm]	$I_s$ [mm]	$d_s$ [mm]	$t_{fix}$ [mm]	Drive	$d_r$ [mm]	€ / 100 pcs	[pcs]	[pcs]
IPSZ-H 55	955IPSZH	55	16	10	3,5	≤ 10	TX 25	8 – 10 *		50	900

\* Soft tinsmith profiles can be drilled directly.

### Loads and dimensions

Type	Applications in wood fibre insulation boards unplastered $F_{rec}$ [kN]	Applications in wood fibre insulation boards plastered $F_{rec}$ [kN]	Applications in Polystyrene XPS [perimeter insulation] unplastered $F_{rec}$ [kN]	Aerated concrete AAC2 $F_{rec}$ [kN]	Aerated concrete AAC4 $F_{rec}$ [kN]	Thickness of insulation material or brick ≥ [mm]
IPSZ-H 55	0,10*	ca. 0,12*	0,07	0,16	0,25	60

$F_{rec}$ : Recommended load in all directions incl. safety factor of 5

\* Value may differ depending on wood fibre board type as well as type and thickness of the plaster