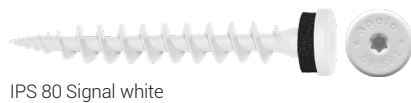


Insulation screw IPS 80

Advantages



IPS 80 Signal white



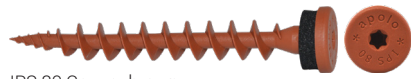
IPS 80 Telegrey



IPS 80 Anthracite grey



IPS 80 Traffic black



IPS 80 Copper brown



IPS 80 Sepia brown



IPS 80 Chocolate brown

- Special screw for direct fastening into external thermal insulation composite systems (ETICS) - extremely fast and without thermal bridges!
- For fastening of wall connection profiles, metal sheets, base protection profiles, cornice covers, motion detectors, lamps, signs, etc. into the insulation material
- No pre-drilling in plaster (≤ 7 mm) due to sharp drilling tip
- Special screw made out of glass-fibre reinforced nylon with EPDM sealing; ageing, weather and UV-resistant
- Pre-assembled and weather resistant EPDM sealing ensures clean sealing against driving rain up to wind force 11 (violent storm), tested according to DIN EN 12155, no reworking required
- Stylish flat head, different colors
- Suitable for clearance holes $\geq \varnothing 8$ mm (common for wall profiles)
- Also suitable for light duty fixings in combination with a screw $\varnothing 3,5$ mm



Suitable building materials

Very suitable

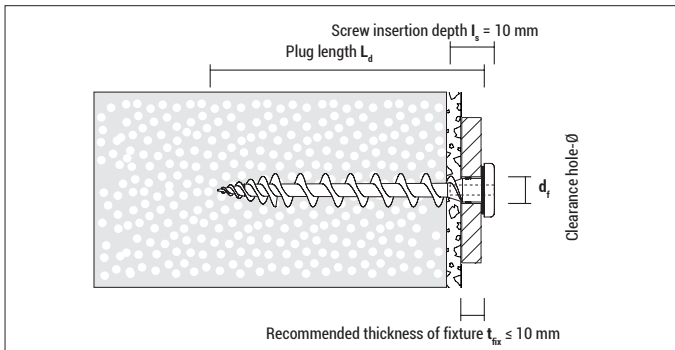


- External Thermal Insulation Composite Systems (ETICS)
- Styrofoam boards
- Polystyrene boards
- Wood fibre boards (IPS-H, see page 96, is recommended)
- Hard foam boards

Approvals and certificates

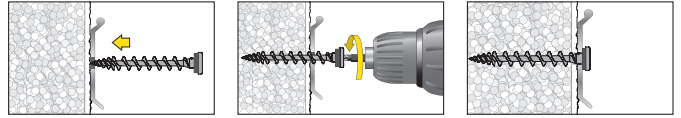


Insulation screw IPS

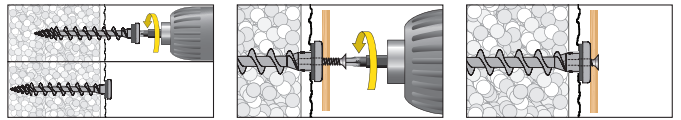


Mounting

Wall connection profiles



Light duty fixings with screw



Usable with: Screw \varnothing 3,5 mm;
Screw length $L_s = 10$ mm + Thickness of fixture



IPS 80 with EPDM sealing, head $\varnothing = 16,0$ mm

Type	Art-No	RAL-Code	L_d [mm]	Drive	d_f [mm]	€ / 100 pcs	[pcs]	[pcs]
IPS 80 Signal white	9180IPS	RAL 9003	80	TX 25	8 – 10		50	900
IPS 80 Telegrey	9GR80IPS	RAL 7045	80	TX 25	8 – 10		50	900
IPS 80 Anthracite grey	9AN80IPS	RAL 7016	80	TX 25	8 – 10		50	900
IPS 80 Traffic black	9480IPS	RAL 9017	80	TX 25	8 – 10		50	900
IPS 80 Copper brown	9CO80IPS	RAL 8004	80	TX 25	8 – 10		50	900
IPS 80 Sepia brown	9M80IPS	RAL 8014	80	TX 25	8 – 10		50	900
IPS 80 Chocolate brown	9MO80IPS	RAL 8017	80	TX 25	8 – 10		50	900



Blister IPS 80 incl. screws made of stainless steel A2, PH2



Type	Art-No	L_d [mm]	Plug Recess	d_f [mm]	$d_s \times L_s$ [mm]	Type of screw	€ / Blister	[pcs]	[Blister]
IPS 80 PH	5180IPSPH4	80	TX 25	8 – 10	3,5 x 13 + 3,5 x 16			4	10

Loads and dimensions

Type	Applications in Polystyrene EPS [PS15, PS20] unplastered F_{rec} [kN]	Applications in Polystyrene EPS [PS15, PS20] plastered F_{rec} [kN]	Application in Rockwool, Coverrock Plus unplastered ¹⁾ F_{rec} [kN]	Applications in Polystyrene XPS [perimeter insulation] F_{rec} [kN]	Thickness of insulation material \geq [mm]
IPS 80	0,04	ca. 0,06*	0,02	0,09*	80

F_{rec} : Recommended load in all directions incl. safety factor of 5

* Value may differ depending on the type and thickness of the plaster

¹⁾ Avoid impact loads