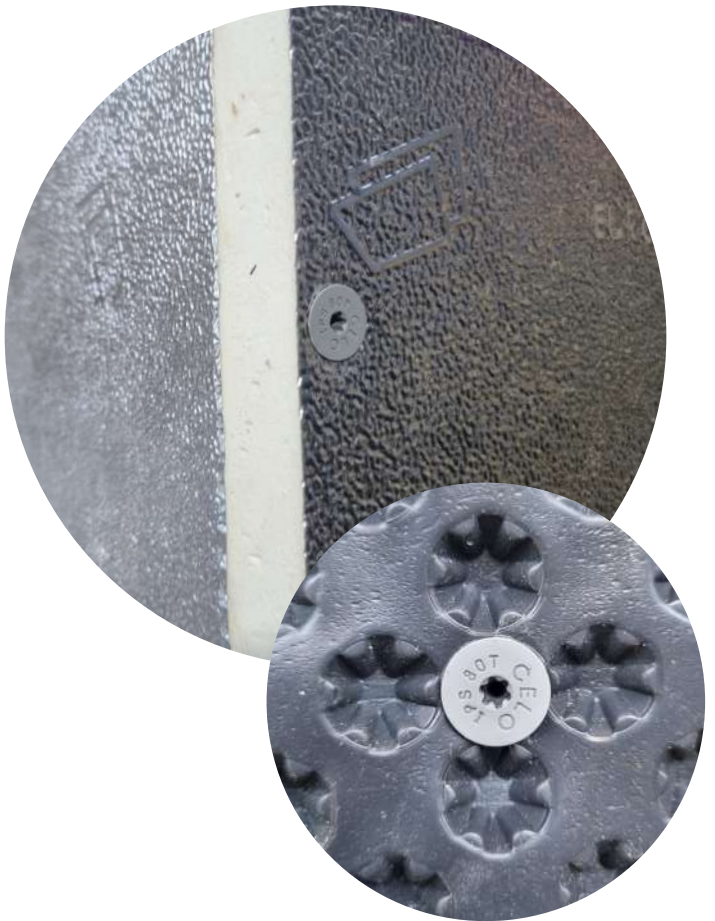


# Insulation screw IPS 80T



## Advantages



- Special screw with trumpet head for direct fastening into external thermal insulation composite systems (ETICS) - fast and without thermal bridges!
- Perfectly suitable for joining two insulation boards such as PU rigid foam boards, fastening foils or for the sheathing/insulation of ventilation ducts
- For fixing motion detectors, lighting, signs etc. in the insulation board
- No need to pre-drill into plaster ( $\leq 7$  mm) due to the sharp drilling tip
- Special screw made out of robust glass-fibre reinforced nylon; ageing-, weather- and UV-resistant
- Functional trumpet head for flush countersinking
- Suitable for light fixings with a screw  $\varnothing 3.5$  mm due to head hole

## Approvals and certificates



## Suitable building materials

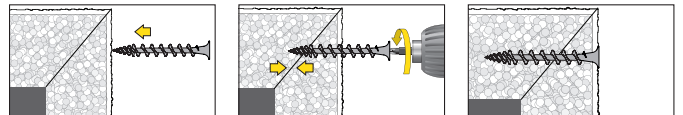
### Very suitable



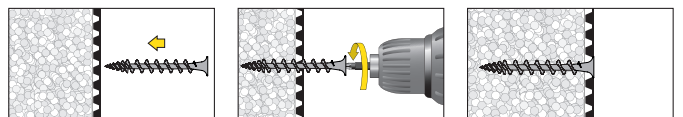
- External Thermal Insulation Composite Systems (ETICS)
- Styrofoam boards
- Hard foam boards
- Polystyrene boards
- Wood fibre boards (also see IPS-H)

## Mounting

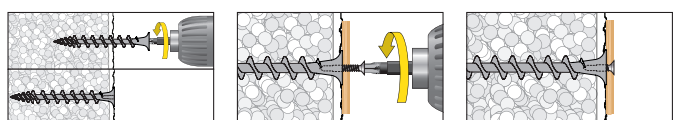
### Example: Joining two insulation boards



### Example: Fastening insulation foil

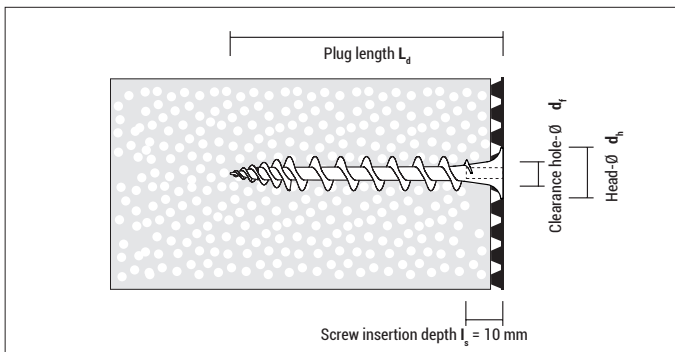


### Lightweight fastening with screw



Can be used with: screw  $\varnothing 3.5$  mm;  
Screw length  $L_s = 10$  mm + thickness of fixture

## Insulation screw IPS 80T



**IPS 80T**, Head-Ø = 16,0 mm

Type	Art-No	RAL-Code	$L_d$ [mm]	Drive	$d_i$ [mm]	€ / 100 pcs	[pcs]	[pcs]
IPS 80T Telegrey	GGR80IPST	RAL 7045	80	TX 25	8 – 10		1.500	–

In bulk, delivery on order

### Loads and dimensions

Type	Applications in Polystyrene EPS (PS15, PS20) unplastered	Applications in Polystyrene EPS (PS15, PS20) plastered	Application in Rockwool, Coverrock Plus unplastered <sup>1)</sup>	Applications in Polystyrene XPS (perimeter insulation)	Thickness of insulation material
	$F_{rec}$ [kN]	$F_{rec}$ [kN]	$F_{rec}$ [kN]	$F_{rec}$ [kN]	≥ [mm]
IPS 80T	0,04	ca. 0,06*	0,02	0,09*	80

$F_{rec}$ : Recommended load in all directions incl. safety factor of 5

\* Value may differ depending on the type and thickness of the plaster

<sup>1)</sup> Avoid impact loads