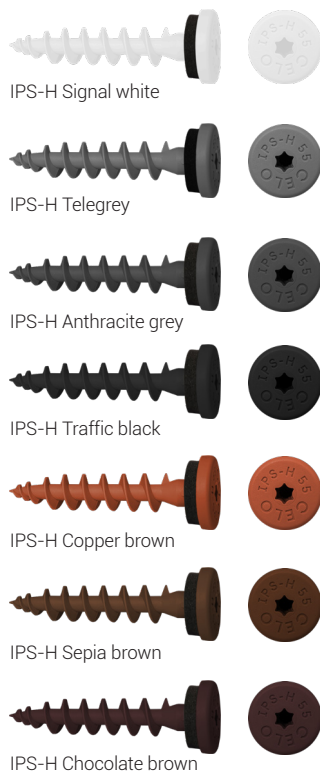


Insulation screw

IPS-H 55



Advantages



- Special screw for direct fastening into wood fibre insulation boards and perimeter insulation panels - extremely fast and without thermal bridges!
- For fastening of wall connection profiles, metal sheets, base protection profiles, cornice covers, motion detectors, lamps, signs, etc. into the insulation material
- Length only 55 mm; therefore also perfectly suitable for small insulation thicknesses (from 60 mm)
- No pre-drilling in plaster (≤ 7 mm) due to sharp drilling tip
- Special screw made out of glass-fibre reinforced nylon with EPDM sealing; ageing, weather and UV-resistant
- Pre-assembled and weather resistant EPDM sealing ensures clean sealing against driving rain up to wind force 11 (violent storm), tested according to DIN EN 12155, no reworking required
- Stylish flat head, different colors
- Suitable for clearance holes $\geq \varnothing 8$ mm (common for wall connection profiles)
- Suitable for light duty fixings in combination with a screw $\varnothing 3,5$ mm

Suitable building materials

Very suitable

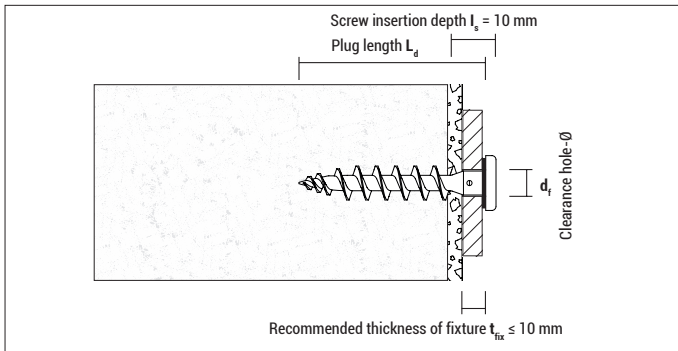


- Wood fibre boards
- Perimeter insulation panels

Approvals and certificates

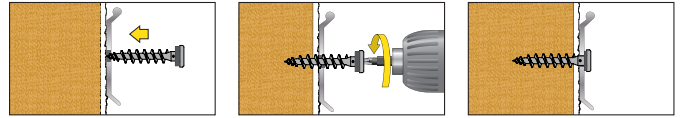


Insulation screw IPS-H

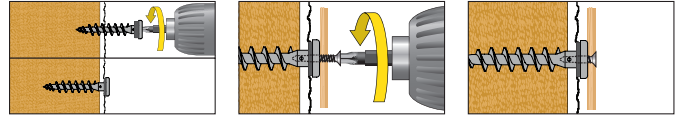


Mounting

Wall connection profiles



Light duty fixings with screw



Usable with: Screw Ø 3,5 mm;
Screw length $L_s = 10 \text{ mm} + \text{Thickness of fixture}$



IPS-H 55 with EPDM sealing, head-Ø = 16,0 mm

Type	Art-No	RAL-Code	L_d [mm]	Drive	d_r [mm]	€/ 100 pcs	[pcs]	[pcs]
IPS-H Signal white	9155IPSH	RAL 9003	55	TX 25	8 – 10		50	1.350
IPS-H Telegrey	9GR55IPSH	RAL 7045	55	TX 25	8 – 10		50	1.350
IPS-H Anthracite grey	9AN55IPSH	RAL 7016	55	TX 25	8 – 10		50	1.350
IPS-H Traffic black	9455IPSH	RAL 9017	55	TX 25	8 – 10		50	1.350
IPS-H Copper brown	9CO55IPSH	RAL 8004	55	TX 25	8 – 10		50	1.350
IPS-H Sepia brown	9M55IPSH	RAL 8014	55	TX 25	8 – 10		50	1.350
IPS-H Chocolate brown	9MO55IPSH	RAL 8017	55	TX 25	8 – 10		50	1.350

Loads and dimensions

Type	Applications in wood fibre insulation boards unplastered F_{rec} [kN]	Applications in wood fibre insulation boards plastered F_{rec} [kN]	Applications in Polystyrene XPS (perimeter insulation) F_{rec} [kN]	Thickness of insulation material ≥ [mm]
IPS-H	0,10*	ca. 0,12*	0,07*	60

F_{rec} : Recommended load in all directions incl. safety factor of 5

* Value may differ depending on the type and thickness of the plaster