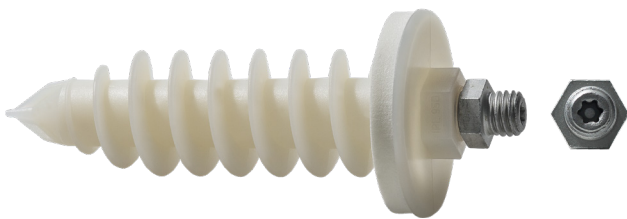


Insulation plug IPL 95DS

Advantages



- Perfect solution for fastening downpipes in ETICS: simple, flexible, fast and adjustable!
- Direct fastening into the insulation material - no thermal bridge
- Pre-mounted special threaded stud: ideal distance of 30 mm of the rainwater downpipe from the wall; adjustment of further 25 mm possible
- Pre-assembled and weather resistant EPDM sealing ensures clean sealing against driving rain up to wind force 11 (violent storm), tested according to DIN EN 12155, no reworking required
- Self-drilling (ETICS plaster ≤ 7 mm) and robust nylon plug, ageing resistant
- Special threaded stud made out of stainless steel A2 or zinc flake coating for optimal corrosion resistance

Suitable building materials

Very suitable



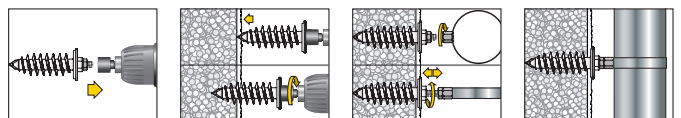
- External Thermal Insulation Composite Systems (ETICS)
- Hard foam boards
- Polystyrene boards
- Heraklith boards
- Wood fibre insulation boards (pre-drilling: 13 mm, HSS-drill or wood drill recommended)



Approvals and certificates

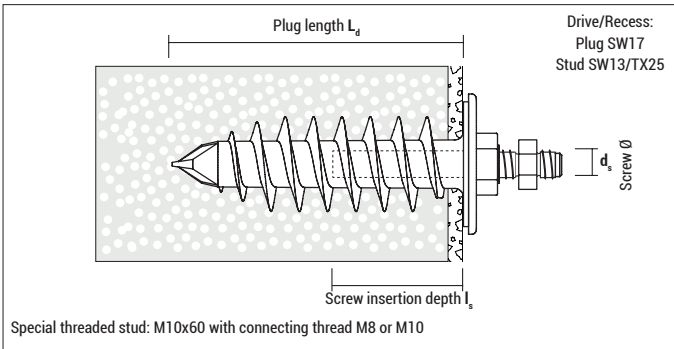


Mounting



- The IPL 95DS can be installed with a hexagon SW17 (recommended), hexagon SW13 socket or TX25 bit
- The special threaded stud can be adjusted up to 25 mm.
- Tip: If the plug should rotate, fixate it with a wrench SW17.

Insulation plug IPL 95DS



IPL 95DS, zinc flake coated sealing cap $\varnothing = 44,5$ mm

Type	Art-No	L_d [mm]	Internal thread d_s	Connecting thread	Material threaded stud	€ / 100 pcs	[pcs]	[pcs]
IPL 95DS M8	ZG895IPLDS4	95	M10	M8	Zinc flake coating		4	80
IPL 95DS	ZG95IPLDS4	95	M10	M10	Zinc flake coating		4	80

Packed by 4 pcs incl. installation instruction in a bag



IPL 95DS, stainless steel A2 sealing cap $\varnothing = 44,5$ mm



Type	Art-No	L_d [mm]	Internal thread d_s	Connecting thread	Material threaded stud	€ / 100 pcs	[pcs]	[pcs]
IPL 95DS M8 A2	X895IPLDS4	95	M10	M8	Stainless steel A2		4	80
IPL 95DS A2	X95IPLDS4	95	M10	M10	Stainless steel A2		4	80

Packed by 4 pcs incl. installation instruction in a bag



IPL 95D sealing cap $\varnothing = 44,5$ mm

Type	Art-No	L_d [mm]	Internal thread d_s	Drive	€ / 100 pcs	[pcs]	[pcs]
IPL 95D	995IPLD	95	M10	SW17		20	160

Loads and dimensions

Type	Applications in Polystyrene EPS (PS15, PS20)	Applications in Polystyrene XPS	Special threaded stud	Screw insertion depth I_s	
	F_{rec} [kN]	F_{rec} [kN]		min [mm]	max [mm]
IPL 95DS / IPL 95D	0,14	0,28	Total length 60 mm Thread inside the plug: 50 mm	20	50

F_{rec} : Recommended load in all directions incl. safety factor of 5