



BENEFITS

- **Multidiameter.** The design for multiple closing and the adaptable lower side allows fixing up to 3 main sizes and all the possible intermediates.
- **Fast installation.** This clamp can be tightly closed by pressing the pipe.
- **Several clamps can be fixed at once.**
- **Resistance to pull out and axial forces.**
- **Black and Grey color UV resistant.**
- **Manufactured with Polyamide 6 modified with elastomer.**
- **Fire resistance:** HB according to UL 94
- **3 possible colours:** Grey RAL 7035, black RAL 9011 and white RAL 9003.
- **Temperature To install** -5°C/ +45°C
- **Temperature installation:** continuously -10°C / +90°C; peak -25°C / +110°C.

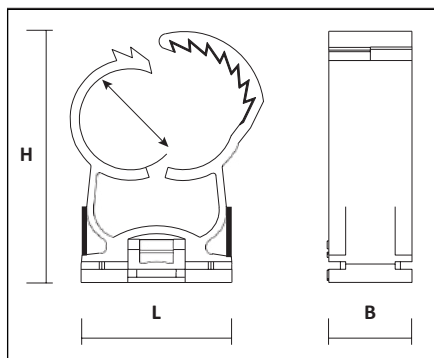
APPROVALS



BASE MATERIALS

- Concrete
- Concrete block
- Wood
- Sandwich panel
- Solid brick
- Steel

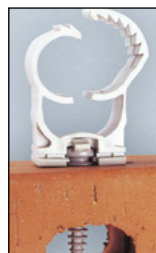
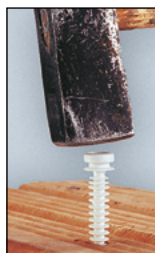
MAIN DIMENSIONS (mm)



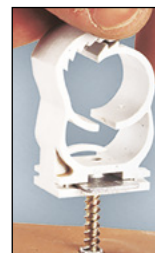
Reference	Clamping range [mm]	L _{tot}	H _{aprox}	B
ABM 10 -14	10-14	22	32	16
ABM 14 -18	14-18	20	35	16
ABM 20 -25	20-25	29	48	16
ABM 25 - 32	26-32	32	52	16
ABM 35 - 42	35-42	45	66	16

INSTALLATION PROCEDURE

Installation using screw (TG, DIN 7981, VELOX,...) and plastic plug (NF, FX,...), channel (2000PB, PVC, E2000PG).



Application with a fixing plug for Ø6 drill bit (Tacomax®).



Application with M6 nut (Insermax®).



TACOMAX



INSERMAX
M6

Small Things Matter

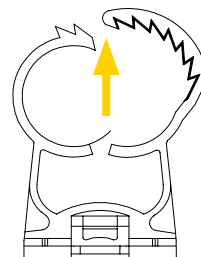
RECOMMENDED LOADS

Resistance according to KIWA Approval

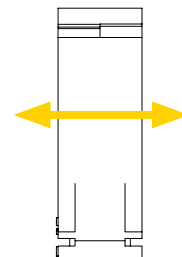
Ref. (mm)	Radial direction (kg)			Axial direction (kg)
	Resistance approved by Kiwa in 23°C of normal conditions	Recommended value at 90°C	Break value at 23°C [forced aperture]	Final resistance 23°C [*]
14-18	19	11	45	3,5
20-25	24	16	45	4
26-32	24	16	50	4,5
35-42	38	19	65	4,5

(*) Higher diameter in every case.

Resistance in
radial direction



Resistance in
axial direction



INSTALLATION PARAMETERS

In normal conditions of 23°C:

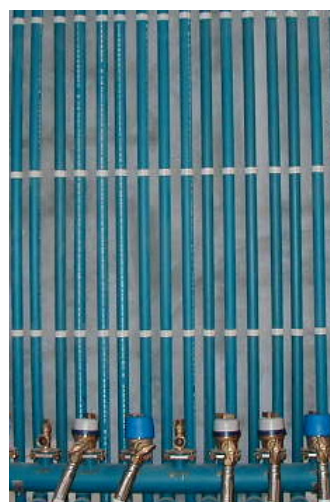
- In horizontal position it is recommended a distance of 1,5 m for electrical installations and 1 m for sanitary installations.
- In vertical position it is recommended a distance of 2 m for electrical installations and 1,3 m for sanitary installations.

In conditions of 90°C:

- It is recommended in plumbing installations a distance of 0,7 m for horizontal position and 1 m for vertical position.

APPLICATIONS

- Holding of plastic pipes.
- Optimum fixing of warm water pipes.



RANGE OF PIPES

Ref.	Holding of pipes		
	Steel	Copper	Plastic
10-14	1/8"	10	-
	-	12	-
	1/4"	-	-
14-18	-	15	-
	-	-	16
	3/8"	18	-
20-25	-	-	20
	-	22	-
	1/2"	-	25
25-32	-	-	25
	3/4"	28	-
	-	-	32
35-42	-	35	-
	1 1/4"	-	40
	-	42	-

