

### BENEFITS

- High resistance in dry wall.
- Fast installation, only 4 steps: drill, insert, move the washer and break the legs.
- It allows different screw lengths.
- Model with screw
- Material:
  - Plastic legs: PS.
  - Washer: PP

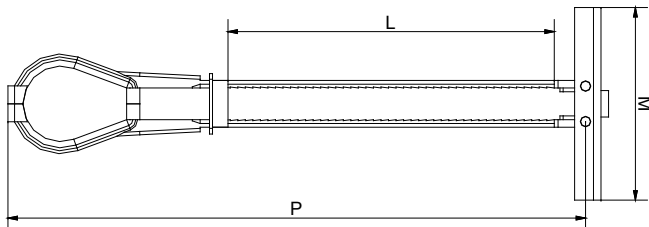
### BASE MATERIAL

- Dry wall.
- Concrete block.

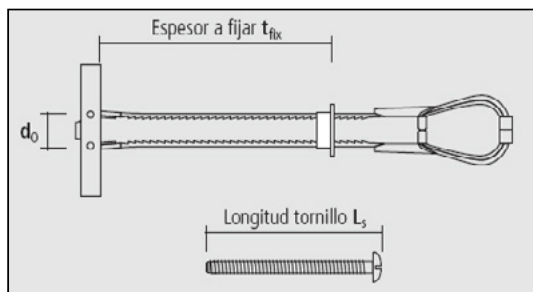


### MAIN DIMENSIONS (MM)

Ref.	Metal piece length M	Plastic legs length P	Plastic leg toothed length L	Screw recess	Screw length L <sub>s</sub>
BTM4	36	150	95	PZ2	50
BTM5	51	150	95	+ slot	62
BTM6	51	150	95	Hex.	62
BTM8	51	150	95	Hex.	80

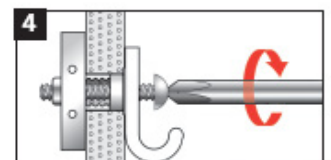
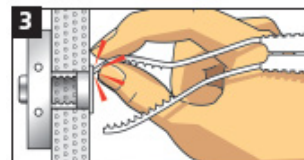
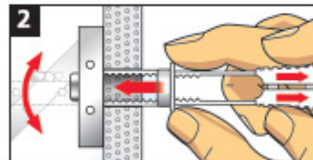
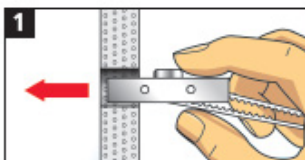


### INSTALLATION PARAMETERS



Ref.	d <sub>0</sub> Drill bit (mm)	Thread	T <sub>fix</sub> Min-max (mm)
BTM4	13	M4	10-60
BTM5	13	M5	10-60
BTM6	13	M6	10-60
BTM8	18	M8	10-60

### INSTALLATION PROCEDURE



● ● ● **Small Things Matter** ● ● ●

## RECOMMENDED LOADS

Ref.	Tension load [kg]			Shear load [kg]		
	Drywall 12.5 mm	Fire retardant drywall 12.5 mm	Waterproof drywall 12.5 mm	Drywall 12.5 mm	Fire retardant drywall 12.5 mm	Waterproof drywall 12.5 mm
BTM4	35	95	50	95	220	100
BTM5	45	107	56	102	228	108
BTM6	45	107	56	102	228	108
BTM8	45	107	56	108	235	112

\* Breakage of the base material.

## APPLICATIONS

- Fixing of pieces on dry wall.
- Fixing on hollow materials like concrete blocks.

