



## Direct fastening into wood fibre insulation boards and perimeter insulation panels – extremely fast and without thermal bridges

### 7 colours

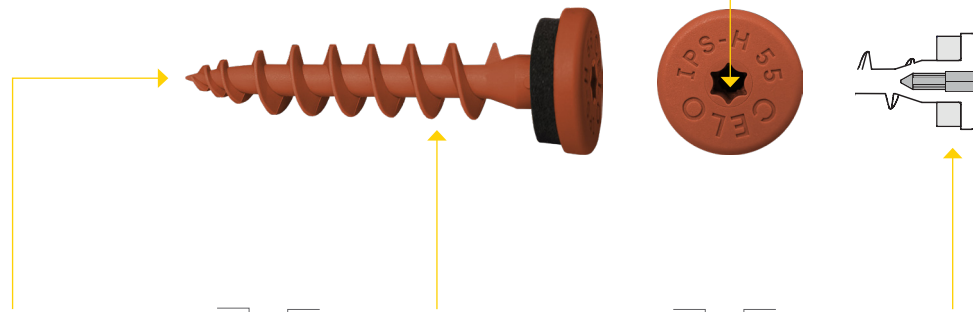
- Matched to the most common metal colours
- Great look

### Stylish flat head with EPDM sealing

- for optimal sealing and adaption to the ground

### TX-Drive (TX25)

- for a fast and easy installation



No pre-drilling in plaster ( $\leq 7$  mm) due to **sharp drilling tip**; extremely fast mounting

### Sharp drilling tip

- Direct mounting in plastered insulation possible
- No Pre-drilling in plaster
- **Enormous time saving**

Very distinctive thread

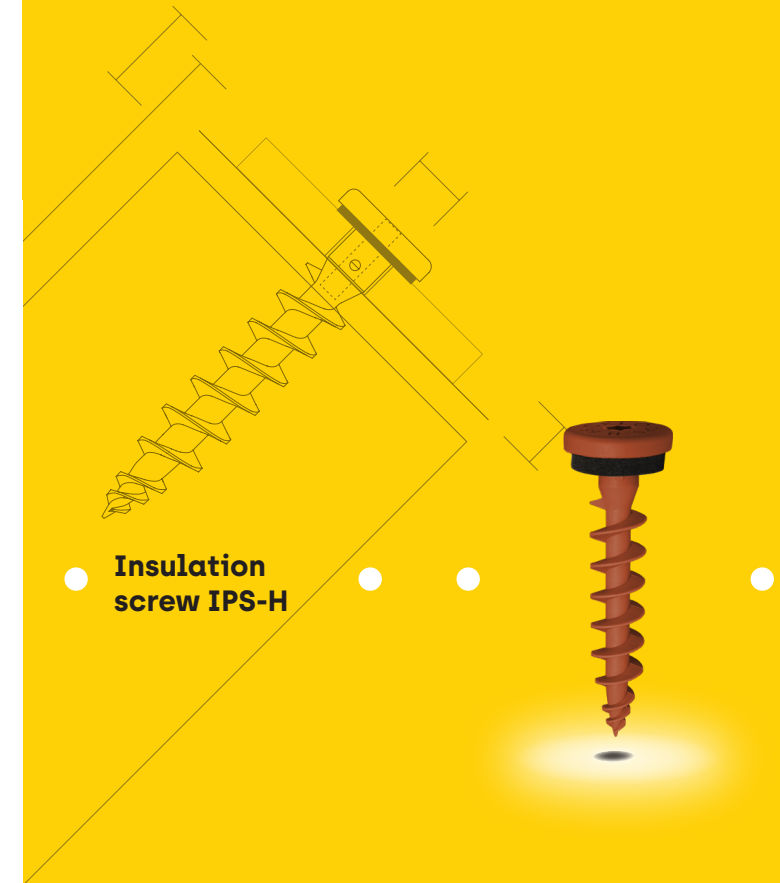
- **Very good hold in wood fibre insulation boards**
- Can be screwed into holes  $\varnothing 8$  (usual hole diameter for wall connection profiles!)
- **No thermal bridge**

**Head hole**; allows light duty fixings in combination with a screw  $\varnothing 3,5$  mm

### Head hole

- additional application options with chipboard screws  $\varnothing 3,5$  mm

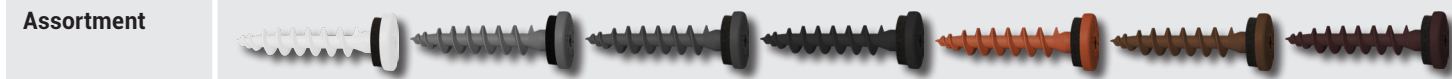
The insulation screw IPS-H is perfectly suitable for **direct fixing without thermal bridges** in wood fibre insulation boards of wall connection profiles, protection panels, cornice covers as well as other panels such as signs (can also be fixed with a 3.5 mm screw in the head hole of the IPS-H. Screw length:  $L_s = 10\text{mm} + t_{\text{fix}}$ ), lamps and letter boxes



Insulation screw IPS-H



## Profile – *IPS-H*



Assortment

Approvals and certificates



Typical applications

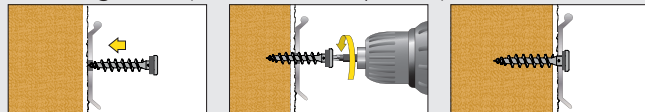
**Suitable for direct fastening in wood fibre insulation boards and perimeter insulation:**

- ▶ Wall connection profiles
- ▶ Base protection profiles
- ▶ Cornice covers
- ▶ Small lamps
- ▶ Signs, metal sheets
- ▶ Motion detectors

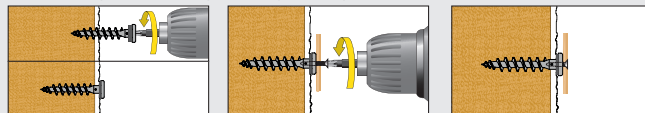


Mounting and dimensions

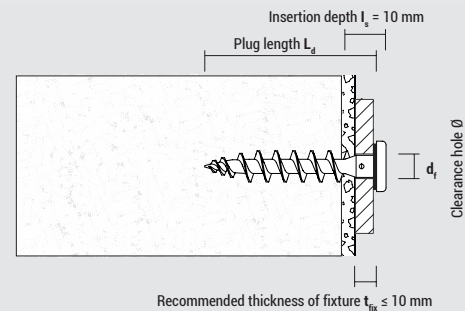
**Mounting IPS-H (wall connection profiles)**



**Mounting IPS-H (light duty fixings with screw)**



Usable with: Screw  $\varnothing$  3,5 mm; Screw length  $L_s = 10$  mm + thickness of fixture



## Assortment *IPS-H* with EPDM sealing, head $\varnothing = 16,0$ mm

Type	Art-No	RAL-Code	$L_d$ [mm]	Drive	$d_f$ [mm]	Packing	
						[pcs]	[pcs]
IPS-H Signal white	9155IPSH	RAL 9003	55	TX 25	8 – 10	50	1.350
IPS-H Telegrey	9GR55IPSH	RAL 7045	55	TX 25	8 – 10	50	1.350
IPS-H Anthracite grey	9AN55IPSH	RAL 7016	55	TX 25	8 – 10	50	1.350
IPS-H Traffic black	9455IPSH	RAL 9017	55	TX 25	8 – 10	50	1.350
IPS-H Copper brown	9CO55IPSH	RAL 8004	55	TX 25	8 – 10	50	1.350
IPS-H Sepia brown	9M55IPSH	RAL 8014	55	TX 25	8 – 10	50	1.350
IPS-H Chocolate brown	9MO55IPSH	RAL 8017	55	TX 25	8 – 10	50	1.350

## Loads and dimensions

Type	Application in wood fibre insulation boards unplastered	Application in wood fibre insulation boards plastered	Application in Polystyrene EPS + XPS (perimeter insulation)	Thickness of insulation material
IPS-H	$F_{rec}$ [kN] 0,10*	$F_{rec}$ [kN] ca. 0,12*	$F_{rec}$ [kN] 0,07*	$\geq$ [mm] 60

$F_{rec}$ : Recommended load in all directions incl. safety factor of 5

\* Value may differ depending on the type and thickness of the plaster

CELO Befestigungssysteme GmbH

Industriestraße 6

D-86551 Aichach

www.celofixings.com

Hotline: +49 (0) 8251-90485-0

Telefax: +49 (0) 8251-90485-49

E-mail: info@celofixings.de

Presented by:

Technical products and illustrations are subject to change. The reprint of this brochure, in part or in whole, is prohibited. CELO Befestigungssysteme GmbH accepts no liability for the correctness of the information provided.