

# CELO

Gas nailer  
**FORCE ONE+**





**FORCEONE+**  
by CELO

# The most powerful, lightweight and ergonomic gas nailer: **FORCE ONE+**



## The leading gas nailer

Increase your productivity by installing faster while reducing costs with the FORCE ONE+, the most powerful, lightweight and ergonomic nailer available on the market.

## For multiple applications

With more than 50 references of accessories and nails that will allow you to cover most fixing needs for light and medium loads in electrical and sanitary engineering applications on hard materials such as steel and concrete as well as on solid stone, hollow block and wood.

## Support and solutions...

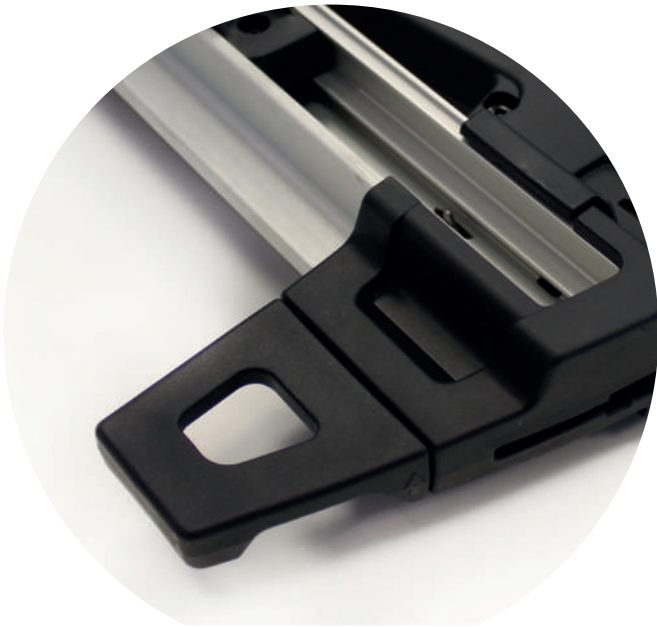
... to optimise your investment

- Personalised technical assistance
- On-site training and demonstrations
- Extended warranty to 4 years\*
- Official support for repair and maintenance
- Stock in warehouse and fast deliveries (24 hours)

\* 2+2 warranty: CELO extends the warranty for registered nailers at [www.celofixings.com](http://www.celofixings.com) by 2 years



# The best of FORCE ONE+ : features and benefits



**Greater support and stability**  
during nailing thanks to the improved design  
of the nailer foot.



**Maximum dust protection**  
for ceiling fixings, ensuring long-lasting  
performance with the new front guard.



**Robustness and durability**  
optimised through years of experience  
in the market



**Improved transport and storage**  
thanks to a case that offers more practical,  
safe and stackable storage, and an optimised  
distribution of its elements for more comfortable  
transport.

# FORCE ONE+ system

## New ETA approval

This approval confirms the high quality, reliability and safety of our direct fastening products, assuring customers that they can rely on our solutions for their installation needs. With an impressive success rate, our system guarantees **optimal performance** even if an individual nail fails.



ETA approval is specifically linked to the integration and compatibility of the complete FORCE ONE+ system. For the certification to be valid, it is essential to use the **FORCE ONE gas nailer or FORCE ONE+ with CELO nailing accessories and XHA nails (min. length = 22 mm).**\*

In addition to the ETA approval, most CELO steel nailing accessories are fire approved (EMI, PAVUS, TSUS, CNBOP).



\* Check the options and updates on the website.

## What does an ETA approval mean?

### Compliance with technical standards

The ETA assessment evaluates the technical applicability of the FORCE ONE+ system and its suitability for various applications.

### Improved reliability

Our XHA nails have been extensively tested and approved to deliver consistent, reliable performance on a variety of projects.

### Quality standards

ETA approval guarantees that our system complies with strict regulations, which provides peace of mind to professionals and helps mitigate potential risks on site.

## Approved system

### CELO accessories



### XHA nails



From nail size 22 mm

### FORCE ONE+



# Gas nailer FORCE ONE+



## Advantages

- The most reliable and powerful tool for demanding applications.
- Compact and lightweight, it allows for good continuous use in tight spaces.
- Maximum dust protection for ceiling installations, ensuring a longlasting performance.
- Nailer foot design provides superior support and exceptional stability during nailing.
- Optimized gas canister placement allows for better balance and easy insertion.
- Updated case that improves the carrying experience, offering a more practical and secure storage solution for greater comfort.

## Applications

### Electrical Installations

Fastening of various light electrical installations (cables, conduits, cable channels, lamp suspensions etc.)

### HVAC sector

Fixing of heating pipes, ventilation channels etc.

### Drywall construction

Fastening of drywall profiles

### On the façade / tunnel construction / motorways

Fastening of insulating mats, moisture-repellent foils, protective material for floor coverings, fleece

## Suitable building materials

- Steel
- Concrete
- Hollow concrete block
- Solid brick
- Wood



Scan the QR code and discover the FORCE ONE+ nailing system

## Technical data of gas nailer FORCE ONE+

Characteristics	Technical data
Height	365 mm
Width	124 mm
Length	334 mm
Weight	3.6 Kg (incl. battery)
Power	105 Joule
Loading capacity	FORCE ONE 20: 20 + 3 nails* FORCE ONE 40: 40 + 3 nails*
Type of battery	NiMH-battery (battery lasts for 3000 nails)



Narrow nose for nailing profiles



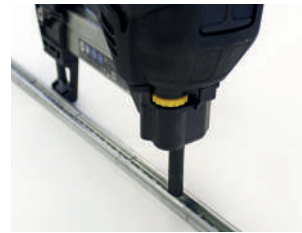
Reinforced nose for shooting on any surface



Ergonomic design ensuring greater comfort



Improved stability during the setting process



High precision depth regulator



Maximum protection against dust

## Case includes

- 1 gas nailer FORCE ONE+
- 1 magazine for 20 or 40 nails
- 2 batteries
- 1 charger
- 2 allen keys (4 and 5)
- 1 jam clear tool
- Safety goggles
- Ear plugs
- Instruction manual



Characteristics	Technical data
Nail length	15 - 40 mm
Capacity of battery	6V DC, 1.5Ah
Power consumption (Rated output)	8VA (10V 800mA)
Connection charger	100-240V AC. (50 or 60Hz)
Charging time	max. 120 minutes
Temperature range for use	-10°C to +40°C

\* There must be at least 3 nails in the magazine, otherwise the nailer cannot be triggered.



when combining approved accessories, XHA-nails (22-38 mm) and FORCE ONE+

### Gas nailer FORCE ONE+

Type	Art-No		[Set]	[pcs]
FORCE ONE+ with magazine for 20 nails	FONEPLUS20	●	1	-
FORCE ONE+ with magazine for 40 nails	FONEPLUS40	●	1	-



### Battery and charger for gas nailer FORCE ONE+

Type	Art-No	[pcs]	[pcs]
FORCE ONE+ Battery	FONEBAT	1	-
FORCE ONE+ Charger	FONECARSET	1	-



### High-performance gas for gas nailer FORCE ONE+

Type	Art-No	Height [mm]	Content [ml]	Shelf life [months]	[pcs]	[pcs]
Fuel cell*	9GASFONE	180	80	24	1	20

\* sufficient for min. 800 nails

## Nail length selector according to base material

Recommended base materials based on nail type and length											
Base material	XHA 15 mm	TKA 15 mm	XHA 17 mm	TKA 19 mm	XHA 22 mm	TKA 25 mm	XHA 27 mm	TKA 30 mm	XHA 32 mm	XHA 38 mm	TKA 40 mm
Steel	●	○									
Concrete > C20/25			●		○						
Concrete C20/25			○	●	●	●	○				
Solid brick			○	●	●	●	●	○	○		
Concrete block						●	●	●	●		
Wood										●	●

● Highly recommended | ○ Suggested

## Steel nails XHA

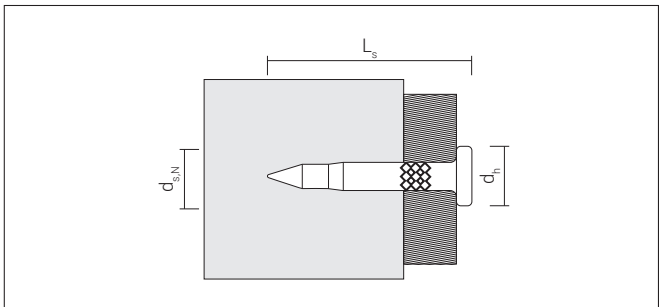


when combining approved accessories, XHA-nails (22-38 mm) and FORCE ONE++



### Characteristics

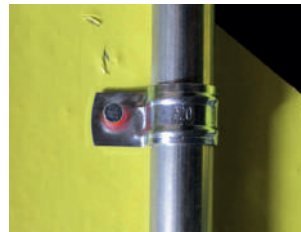
- Premium nails; suitable for hard concrete and steel
- Nail 15 mm especially hardened for steel
- Grooved nails to improve grip
- Each box includes one high-performance fuel cell, sufficient for 800 nails
- ETA-approved from length 22 mm



$L_s$ : Length

$d_h$ : Head-Ø

$d_{s,N}$ : Nail-Ø



### XHA Premium-nails

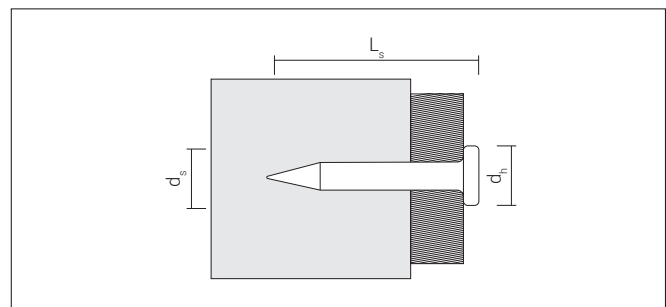
Typ	Art.-Nr.	Nail-Ø $d_{s,N}$ [mm]	Length $L_s$ [mm]	Head-Ø $d_h$ [mm]		[pcs]	[pcs]
XHA premium nails 15 mm + fuel cell	913800XHA	3	15	6,3	-	800	4.000
XHA premium nails 17 mm + fuel cell	917800XHA	3	17	6,3	-	800	4.000
XHA premium nails 22 mm + fuel cell	922800XHA	3	22	6,3	●	800	4.000
XHA premium nails 27 mm + fuel cell	927800XHA	3	27	6,3	●	800	4.000
XHA premium nails 32 mm + fuel cell	932800XHA	3	32	6,3	●	800	4.000
XHA premium nails 38 mm + fuel cell	938800XHA	3	38	6,3	●	800	4.000

## Steel nails TKA



### Characteristics

- Standard nails for concrete and solid bricks
- Each box includes one high-performance fuel cell, sufficient for 800 nails



$L_s$ : Length

$d_h$ : Head-Ø

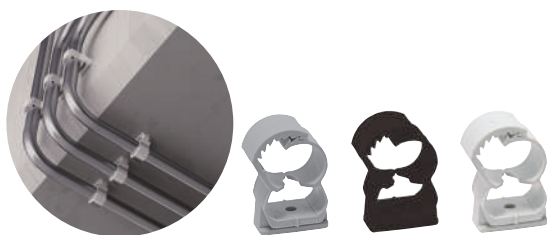
$d_{s,N}$ : Nail-Ø



### TKA Standard-nails

Typ	Art.-Nr.	Nail-Ø $d_{s,N}$ [mm]	Length $L_s$ [mm]	Head-Ø $d_h$ [mm]	[pcs]	[pcs]
TKA nails 15 mm + fuel cell	915800TKA	2,6	15	6,3	800	4.000
TKA nails 19 mm + fuel cell	919800TKA	2,6	19	6,3	800	4.000
TKA nails 25 mm + fuel cell	925800TKA	2,6	25	6,3	800	4.000
TKA nails 30 mm + fuel cell	930800TKA	2,6	30	6,3	800	4.000
TKA nails 40 mm + fuel cell	940800TKA	2,6	40	6,3	800	4.000





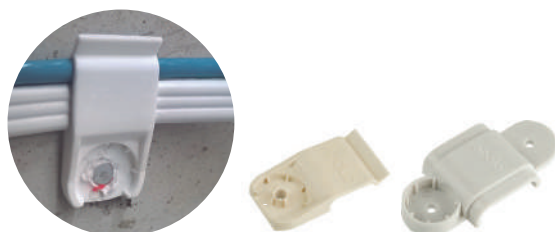
### Multidiameter nylon clamp Abranyl® ABT

Type Ø	Art-No		Art-No		€/100 pcs	Pipe-Ø				ETA	[pcs]	[pcs]
	grey	€/100 pcs	black	white		Metric [mm]	Copper [mm]	Steel [inch]	Plastic [mm]			
ABT 14/18	918ABT		9418ABT	9118ABT		16	14-15-18	3/8"	16	●	100	600
ABT 20/25	925ABT		9425ABT	9125ABT		20-25	22	1/2"	20-25	●	50	450
ABT 26/32	932ABT		9432ABT	9132ABT		32	28	3/4"	32	●	50	300
ABT 35/42	942ABT		9442ABT	9142ABT		40	35-42	1"-1/4"	40-42	●	25	150



### Pipe ring clip UT

Type	Art-No	Pipe-Ø Plastic [mm]	Length L [mm]	Height H [mm]	Width B [mm]	ETA	€/100 pcs	[pcs]	[pcs]
UT 16	916UT	16	23,0	25,5	16,0	●		100	900
UT 20	920UT	20	25,0	29,5	16,0	●		100	900
UT 25	925UT	25	30,5	34,0	16,0	●		100	900
UT 32	932UT	32	38,0	42,0	16,0	●		50	450
UT 40	940UT	40	46,0	50,0	16,0	●		50	300



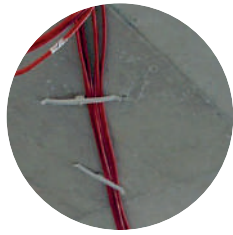
### Nylon clip for flat cables TPC, TPLC

Type	Art-No	For cable-Ø [mm]	Length L [mm]	Width B [mm]	Height H [mm]	€/100 pcs	[pcs]	[pcs]
TPC 6x17	9TPC	6x15	44,0	22,0	7,5		100	900
TPLC 9x25	9TPLC	9x25	64,5	30,0	10,5		100	900



### Nailing cable clasp NCC

Type	Art-No	Length L [mm]	Height H [mm]	Width B [mm]	Cable capacity			€/100 pcs	[pcs]	[pcs]
					Ø6	Ø8	Ø10			
NCC 4	94NCC	75	15	20	6	4	3		100	9.600
NCC 8	98NCC	121	16,8	20	12	8	6		100	8.000
NCC 16	916NCC	222	16,8	22	24	16	12		50	4.000



**Wire conduit WSC / WDC**

Type	Art-No	Length L [mm]	Width B [mm]	Height H [mm]	ETA	€/ 100 pcs	[pcs]	[pcs]
WSC	9WSC	128	20	17	●		100	900
WDC	9WDC	232	20	17	●		50	450

Find our wide range of CCT cable ties on our website at [www.celofixings.com](http://www.celofixings.com)



**Cable tie fasteners TBB for FORCE ONE and FOX**

Type	Art-No	Height H [mm]	Diameter Ø [mm]	ETA	€/ 100 pcs	[pcs]	[pcs]
TBB black	9TBB	13	24,5	●		100	1.200
TBB grey	9GRTBB	13	24,5	●		100	1.200



**Cable tie fasteners NTBB**

Type	Art-No	Height H [mm]	Diameter Ø [mm]	€/ 100 pcs	[pcs]	[pcs]
NTBB grey	9NTBB	13	24,5		100	1.200



**Cable tie fasteners TBBL**

Type	Art-No	Length L [mm]	Width B [mm]	Height H [mm]	ETA	€/ 100 pcs	[pcs]	[pcs]
TBBL black	94TBBL	33	20	10	●		200	-
TBBL grey	9TBBL	33	20	10	●		200	-

Each box includes 200 pcs cable tie 4,8 x 288



Find our wide range of CCT cable ties on our website at [www.celofixings.com](http://www.celofixings.com)



**Cable tie fasteners TBBD**

Type	Art-No	Length L [mm]	Width B [mm]	Height H [mm]	€/ 100 pcs	[pcs]	[pcs]
TBBD	9TBBD	80,0	18,0	9,5		100	600



**Cable tie fasteners TBM**

Type	Art-No	Length L [mm]	Width B [mm]	Height H [mm]	Clearance hole Ø [mm]	€/ 100 pcs	[pcs]	[pcs]
TBM	9TBM	51	25	12,5	6		100	900



when combining approved accessories, XHA-nails (22-38 mm) and FORCE ONE+

**Conduit clips FPD**

Type	Art-No	Pipe-Ø			Pipe sizes [mm]	Length L [mm]	Width B [mm]	Height H [mm]	ETA	€/ 100 pcs	[pcs]	[pcs]
		Copper [mm]	Steel [inch]	Plastic [mm]								
FPD 16	916FPD	18	3/8"	16	16 - 19	59	20	19,5	●		100	900
FPD 20	920FPD	22	1/2"	20	20 - 23	68	20	23,8	●		50	450
FPD 25	925FPD	28	3/4"	25	25 - 28	81	20	29	●		50	450



when combining approved accessories, XHA-nails (22-38 mm) and FORCE ONE+

**Conduit clips FP**

Type	Art-No	Pipe-Ø				Length L [mm]	Width B [mm]	ETA	€/ 100 pcs	[pcs]	[pcs]
		Metric [mm]	Copper [mm]	Steel [inch]	Plastic [mm]						
FP 16	916FP	16	-	-	16	41,5	23	●		100	900
FP 18	918FP	-	18	3/8"	-	43,5	23	●		100	900
FP 20	920FP	20	-	-	20	45,5	23	●		100	600
FP 22	922FP	-	22	1/2"	-	47,5	23	●		100	600
FP 25	925FP	25	-	-	25	50,5	23	●		100	600
FP 28	928FP	-	28	3/4"	-	53,5	23	●		100	600
FP 32	932FP	32	-	-	32	57,5	23	●		50	450

# CELO



when combining approved accessories, XHA-nails (22-38 mm) and FORCE ONE+

see assessment

## Metal multicable hanger clamp CHS

Type	Art-No	Length L [mm]	Width B [mm]	Height H [mm]	ETA	€/100 pcs	[pcs]	[pcs]
CHS 47x41	94741CHS	47	40	41	●		100	-
CHS 35x87	93587CHS	35	40	87	●		50	-

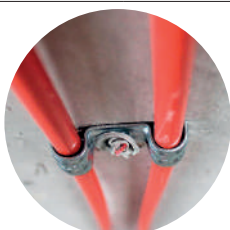


when combining approved accessories, XHA-nails (22-38 mm) and FORCE ONE+

see assessment

## Metal conduit clip PFT

Type	Art-No	Ø [mm]	Length L [mm]	Width B [mm]	Height H [mm]	Pipe-Ø			ETA	€/100 pcs	[pcs]	[pcs]
						Copper [mm]	Plastic [mm]	Cable [mm]				
PFT 5	95PFT	4,5	24	17	3,8	-	-	1x1,5 / 2x0,75	●		100	1.800
PFT 6	96PFT	6	26	17	5,5	6	-	1x1,5 / 1x2,5	●		100	1.800
PFT 7	97PFT	6,5	26,5	17	6	-	-	1x1,5 until 1x6	●		100	1.800
PFT 8	98PFT	7,5	27,5	17	7	8	-	1x6 / 1x10	●		100	1.800
PFT 10	910PFT	9,5	29,5	17	9	10	-	1x16 until 4x1,5	●		100	1.800
PFT 12	912PFT	11,5	31,5	17	11,5	12	-	1x25 until 4x2,5	●		100	900
PFT 14	914PFT	13,5	33,5	17	13,5	15	-	4x6	●		100	900
PFT 16	916PFT	15,5	34,5	17	15,0	-	16	-	●		100	900
PFT 18	918PFT	17,5	36,5	17	17,0	18	-	-	●		100	900
PFT 20	920PFT	19,5	38,5	17	18,5	-	20	-	●		100	900
PFT 22	922PFT	21,5	40,5	17	20,5	22	-	-	●		100	900
PFT 25	925PFT	24,5	43,5	17	23,5	-	25	-	●		100	900
PFT 28	928PFT	27,5	46,5	17	26,5	28	-	-	●		100	900
PFT 32	932PFT	31,5	50,5	17	30,5	35	32	-	●		100	600
PFT 40	940PFT	39,5	58,5	17	38,5	42	40	-	●		50	450
PFT 50	950PFT	49,5	68,5	17	48,5	-	50	-	●		50	450



when combining approved accessories, XHA-nails (22-38 mm) and FORCE ONE+

see assessment

## Metal conduit clip DFT

Type	Art-No	Ø [mm]	Length L [mm]	Width B [mm]	Height H [mm]	Pipe-Ø			ETA	€/100 pcs	[pcs]	[pcs]
						Copper [mm]	Plastic [mm]	Cable [mm]				
DFT 5	95DFT	4,5	34	17	3,8	-	-	1x1,5 / 2x0,75	●		100	1.800
DFT 6	96DFT	6	37	17	5,5	6	-	1x1,5 / 1x2,5	●		100	900
DFT 7	97DFT	6,5	37	17	6	-	-	1x1,5 until 1x6	●		100	1.800
DFT 8	98DFT	7,5	40	17	7	8	-	1x6 / 1x10	●		100	900
DFT 10	910DFT	9,5	44	17	9	10	-	1x16 until 4x1,5	●		100	900
DFT 12	912DFT	11,5	48	17	11,5	12	-	1x25 until 4x2,5	●		100	900
DFT 16	916DFT	15,5	56	17	15	-	16	-	●		100	600
DFT 18	918DFT	17,5	60	17	17	18	-	-	●		100	600
DFT 20	920DFT	19,5	64	17	18,5	-	20	-	●		50	450
DFT 22	922DFT	21,5	68	17	20,5	22	-	-	●		50	450
DFT 25	925DFT	25,5	74	17	23,5	-	25	-	●		50	450
DFT 28	928DFT	27,5	80	17	26,5	28	-	-	●		50	450
DFT 32	932DFT	32	88	17	30	35	32	-	●		50	300



when combining approved accessories, XHA-nails (22-38 mm) and FORCE ONE+

see assessment

### Stud accessory ATR

Type	Art-No	Length L [mm]	Width B [mm]	Height H [mm]	Dimensions Thread x Length	Number of fixing points		€/ 100 pcs	[pcs]	[pcs]
ATR 6	9TR6	36	20,5	8	M6x6,5	1	●		100	900
ATR 8C	9TR8C	64	20,5	8	M8x10	2	●		100	900
ATR 8L	9TR8L	64	20,5	8	M8x17	2	●		100	900



ATV M4-M6

ATV M8 with height adjustment

ATVS M8



when combining approved accessories, XHA-nails (22-38 mm) and FORCE ONE+

see assessment

### Rod hanger ATV, ATVS

Type	Art-No	Metric thread	Length L [mm]	Width B [mm]	Height H [mm]		€/ 100 pcs	[pcs]	[pcs]
ATV M4	9TV4	M4	46	18	41	●		100	600
ATV M5	9TV5	M5	46	18	41	●		100	600
ATV M6	9TV6	M6	46	18	41	●		100	600
ATV M8	9TV8	M8	75	18	26,5	●		50	450
ATVS M8	9TVS8	M8	75	18	26,5	●		50	450



when combining approved accessories, XHA-nails (22-38 mm) and FORCE ONE+

see assessment

### Ceiling hanger AAT

Type	Art-No	Height H [mm]	Length L [mm]	Width B [mm]		€/ 100 pcs	[pcs]	[pcs]
AAT	9AAT	27	26	19	●		100	900



### Wire suspension system AWFS with loop, gripper and ceiling hanger AAT for fixing with gas nailer



Type	Art-No	Ø of steel wire [mm]	Length of steel wire [m]	€/ 100 pcs	[pcs]	[pcs]
AWFS 1,5x3	9153AWFS	1,5	3		10	40
AWFS 1,5x5	9155AWFS	1,5	5		10	40

# ● CELO



HALOGEN  
FREE



## Metal washer AW

Type	Art-No.	Diameter Ø [mm]	Height H [mm]	Sheet thickness $t_m$ [mm]	€ / 100 pcs	 [pcs]	 [pcs]
AW 15	915AW	15	5	1		200	3.600
AW 25	925AW	25	5	0,8		200	3.600





HALOGEN  
FREE

## Plastic washer AP

Type	Art-No	Diameter Ø [mm]	Height H [mm]	€ / 100 pcs	 [pcs]	 [pcs]
AP 16	16AP	16	3		100	1.000
AP 30	30AP	35,5	2,75		100	1.000



## Plastic washer APK for cable ducts

Type	Art-No	Diameter Ø [mm]	Height H [mm]	Height H <sub>1</sub> [mm]	€ / 100 pcs	 [pcs]	 [pcs]
APK	914APK	14	9	2,4		500	9.000

Extended delivery times are possible.





HALOGEN  
FREE

## Textile tape TXS black

Type	Art-No	Height H [mm]	Length L [mm]	Width B [mm]	€ / 100 pcs	 [pcs]	 [pcs]
TXS black	9419TXS	1,25	10.000	19		8	-



**Punched metal tape Cintapolo CA**

Type	Art-No.	Width B [mm]	Clearance hole- $\emptyset$ $d_f$ [mm]	Distance of holes S [mm]	Tensional strength $\leq$ [kg]	 [pcs]	 [pcs]
Cintapolo 12	12CA	12	5,1	14	50	10	-
Cintapolo 17	CA	17	7	20	95	10	-

## Customer service

### Construction site support

Our support extends well beyond just selling products. We are dedicated to offering on-site services and assistance that guarantee each customer maximizes the value and benefits of their investment. These services include::

- **Technical support during installation:** Our expert technical team is on hand to assist with product installation, ensuring that all components are integrated correctly and functioning optimally from day one.
- **Pull-out testing:** We perform pull-out testing to verify the efficiency and effectiveness of the product under real operating conditions. This allows us to ensure that performance meets the expectations and needs of the project.
- **Committed team throughout the project:** Our team remains involved, offering continuous support and quick solutions.



### Demo shelf for specialised dealers

The FORCE ONE display features a **test area where installers can see the FORCE ONE and FORCE ONE+ in action** through live demonstrations.

It also includes a screen showing explanatory videos on the advantages of using a gas nailer compared to traditional installation methods.





CELO Befestigungssysteme GmbH  
Industriestraße 6  
D-86551 Aichach  
www.celofixings.com  
Hotline: +49 (0) 8251-90485-0  
Telefax: +49 (0) 8251-90485-49  
E-mail: info@celofixings.de

## Small Things Matter

Presented by:

EN 01/25

Technical products and illustrations are subject to change. The reprint of this brochure, in part or in whole, is prohibited.  
CELO Befestigungssysteme GmbH accepts no liability for the correctness of the information provided.