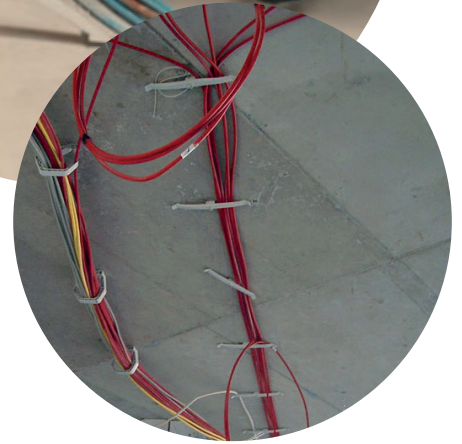
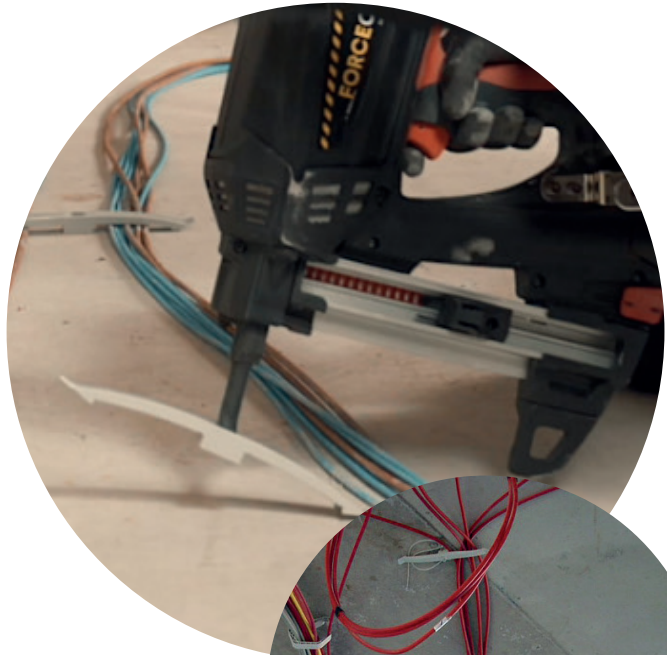


Wire conduit WSC & WDC

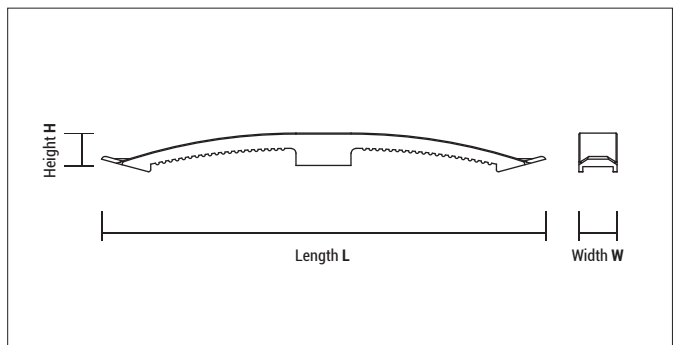
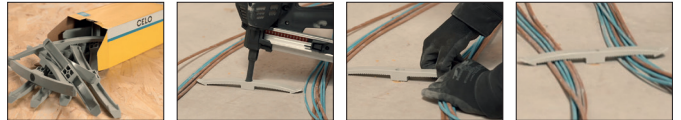


Advantages



- Versatile in use
- Simply push the cable under the wing
- Several cables can be secured with only one fixing point
- Can also be fixed with a plug Ø6 or a nail plug
- RoHS compliant
- Halogen free

Mounting



Approvals and certificates



WSC / WDC

Type	Art-No	Length L [mm]	Width W [mm]	Height H [mm]	€/100 pcs	[pcs]	[pcs]
WSC	9WSC	128	20	17		100	900
WDC	9WDC	232	20	17		50	450

Compatible with gas nailer **FORCE ONE**, Powers Trak It® C3, Spit Pulsa 700E/800E